

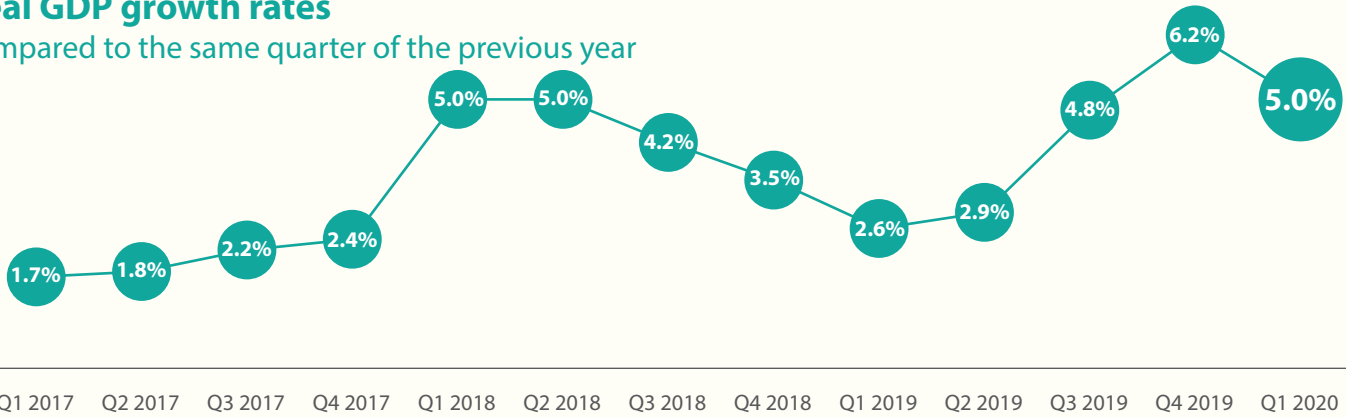


5.0% real GDP growth rate

in Q1 2020 compared to Q1 2019

Real GDP growth rates

compared to the same quarter of the previous year

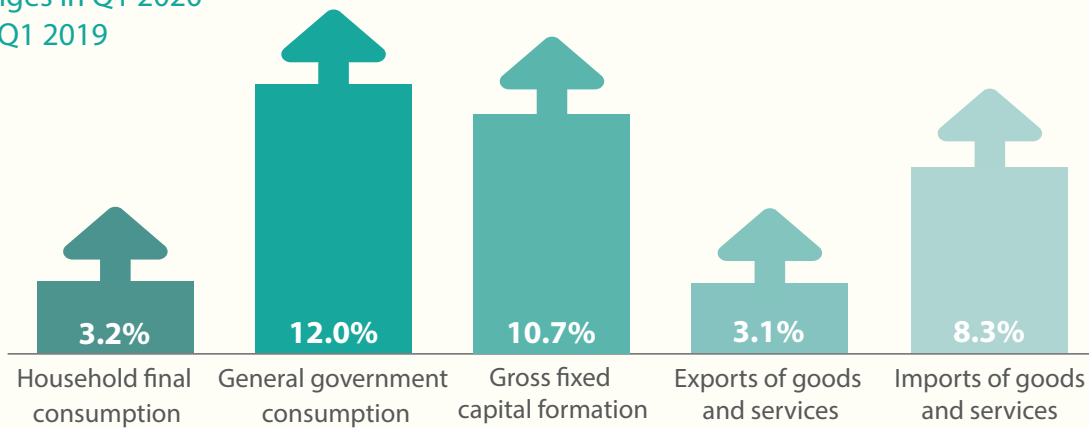


Changes in selected categories

real GDP changes in Q1 2020

compared to Q1 2019

in %

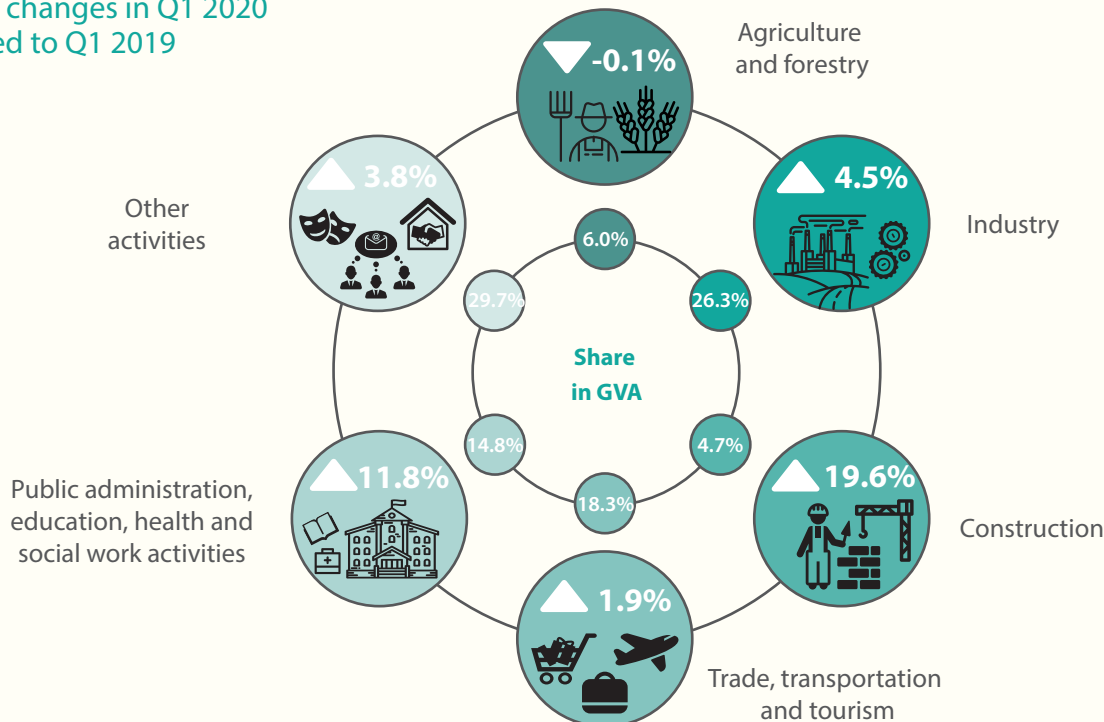


Changes in activities

real GVA changes in Q1 2020

compared to Q1 2019

in %



Notes:

*Parliamentary Budget Office calculation.

GDP = Gross Domestic Product; GVA = Gross Value Added.

Data source: Statistical Office of the Republic of Serbia: Statistical release NR40, number 144/20 and database.

Parliamentary Budget Office

Infographic MK 02/19e, June 2020

pbk@parlament.rs

www.pbk.rs